

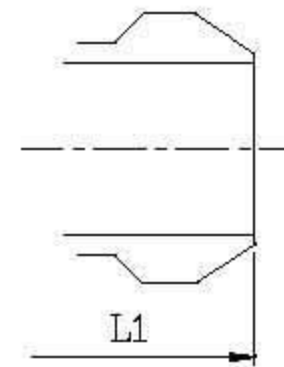
CAST STEEL GLOBE VALVES – ANSI CLASS 150

DESIGN DESCRIPTION:

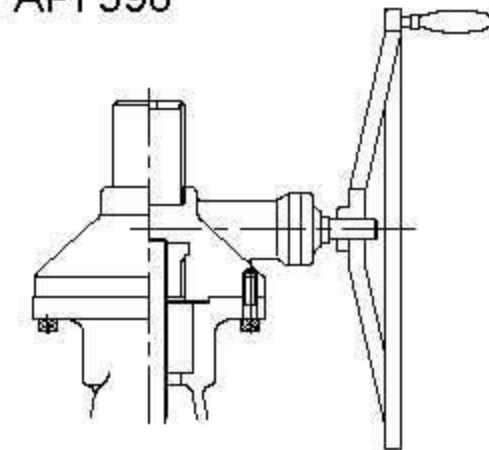
- OUTSIDE SCREW AND YOKE
- BOLTED BONNET
- RISING STEM AND HANDWHEEL (IMPACT-HAMMER HANDWHEEL FOR 10" & OVER.)
- YOKE INTEGRAL WITH BONNET
- LOOSE DISC
- RENEWABLE SEAT RINGS
- FLANGED ENDS
- BUTTWELDING ENDS

APPLICABLE STANDARDS:

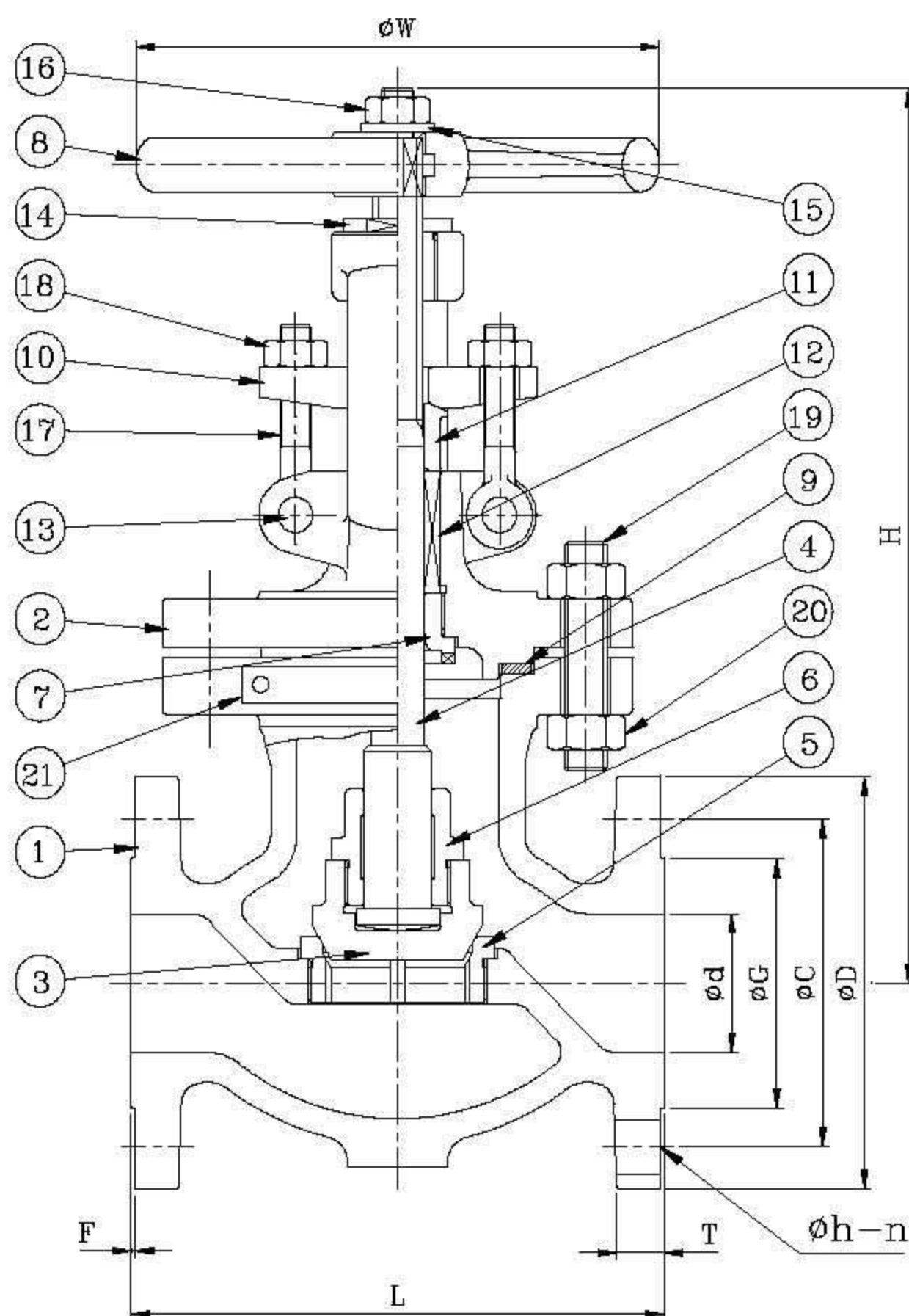
- STEEL VALVES, ANSI B16.34
- FACE TO FACE, ANSI B16.10
- END FLANGES, ANSI B16.5
- BUTTWELDING ENDS, ANSI B16.25
- INSPECTION AND TEST, API 598



Buttwelding Ends



Available With Gear Operator



PARTS AND MATERIAL (ASTM)

NO.	PARTS NAME	MATERIALS		
		WCB	WC6	LCB
1	Body	A216-WCB	A217-WC6	A352-LCB
2	Bonnet	A216-WCB	A217-WC6	A352-LCB
3	Disc	A216-WCB+H/F 410	A217-WC6+H/F 410	A352-LCB+H/F 410
4	Stem	A276-410		
5	Seat	A105+H/F STL#6	A182-F11+H/F STL#6	A350-LF2+H/F STL#6
6	Disc Nut	A276-410		
7	Back Seat	A276-410		
8	Hand Wheel	A47 / A536		
9	Gasket	Grafoil+316 Sheet		
10	Gland Flange	A216-WCB		
11	Gland	A276-410		
12	Gland Packing	Graphite		
13	Eye Bolt Pin	A276-410		
14	Stem Nut	A439-D2		
15	Washer	A36+Zn Plate		
16	Wheel Nut	A194-2H		
17	Eye Bolt	A307 B		
18	Eye Bolt Nut	A194-2H		
19	Bonnet Bolt	A193-B7	A193-B7	A193-B7M
20	Bonnet Bolt Nut	A194-2H	A194-2H	A194-2HM
21	Name Plate	A666-304		

OTHER MATERIALS ARE AVAILABEL UPON REQUEST.

TEST PRESSURE TO API 598

PSIG

SHELL TEST (water)	SEAT TEST (water)	SEAT TEST (air)
450 (32 kg/cm ²)	314 (22 kg/cm ²)	80 (6 kg/cm ²)

DIMENSION TABLE:

DN	NPS	Ød	L & L1	H	H (OPEN)	ØW	T	F	ØD	ØC	ØG	Øh	n	WT.(Kg)
50	2	50.8	203	359	381	200	15.8	1.6	152.4	120.7	92.0	19.0	4	22
65	2 1/2	63.5	216	406	430	250	17.5	1.6	177.8	139.7	104.7	19.0	4	31
80	3	76.2	241	435	468	300	19.1	1.6	190.5	152.4	127.0	19.0	4	41
100	4	101.6	292	498	536	300	23.9	1.6	228.6	190.5	157.2	19.0	8	64
125	5	127	356	515	566	400	24	1.6	254	215.9	186	22.4	8	88
150	6	152.4	406	590	642	400	25.4	1.6	279.4	241.3	215.9	22.3	8	113
200	8	203.2	495	686	757	450	28.5	1.6	342.9	298.5	269.8	22.3	8	190
250	10	254.0	622	786	854	500	30.3	1.6	406.4	362.0	323.9	25.4	12	238
300	12	304.8	699	885	986	600	31.8	1.6	482.6	431.8	381.0	25.4	12	420
350	14	336.6	787	988	1108	700	35.1	1.6	533.4	476.3	412.8	28.5	12	640
400	16	387.4	914	1085	1225	800	36.6	1.6	596.9	539.8	469.9	28.5	16	920